



# NaturalFlow Treatment Systems

## Electrical Connections



# NATURALFLOW TREATMENT SYSTEMS

## Electrical Connection

*New Zealand's Leaders in Eco-Sustainable, Odourless Wastewater and Sewage Systems*

A 240V power socket will be required at the system, this is mounted on a 100x100 post in the vicinity of the tanks.



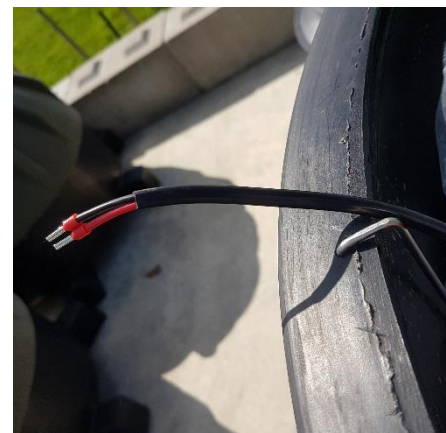
A low voltage cable will need to be run back to the high level alarm in the house from the pump chamber. The high level alarm controller is the size of a standard light switch and fits a flush box, this can be mounted wherever the customer wants it in the house, most commonly in the garage. This alarm controller will be found in a bag inside the pump chamber, which also has the float switch mounted. The float switch has two cables ready for connection to a low voltage data cable.



High Level Alarm Controller



Location inside tank



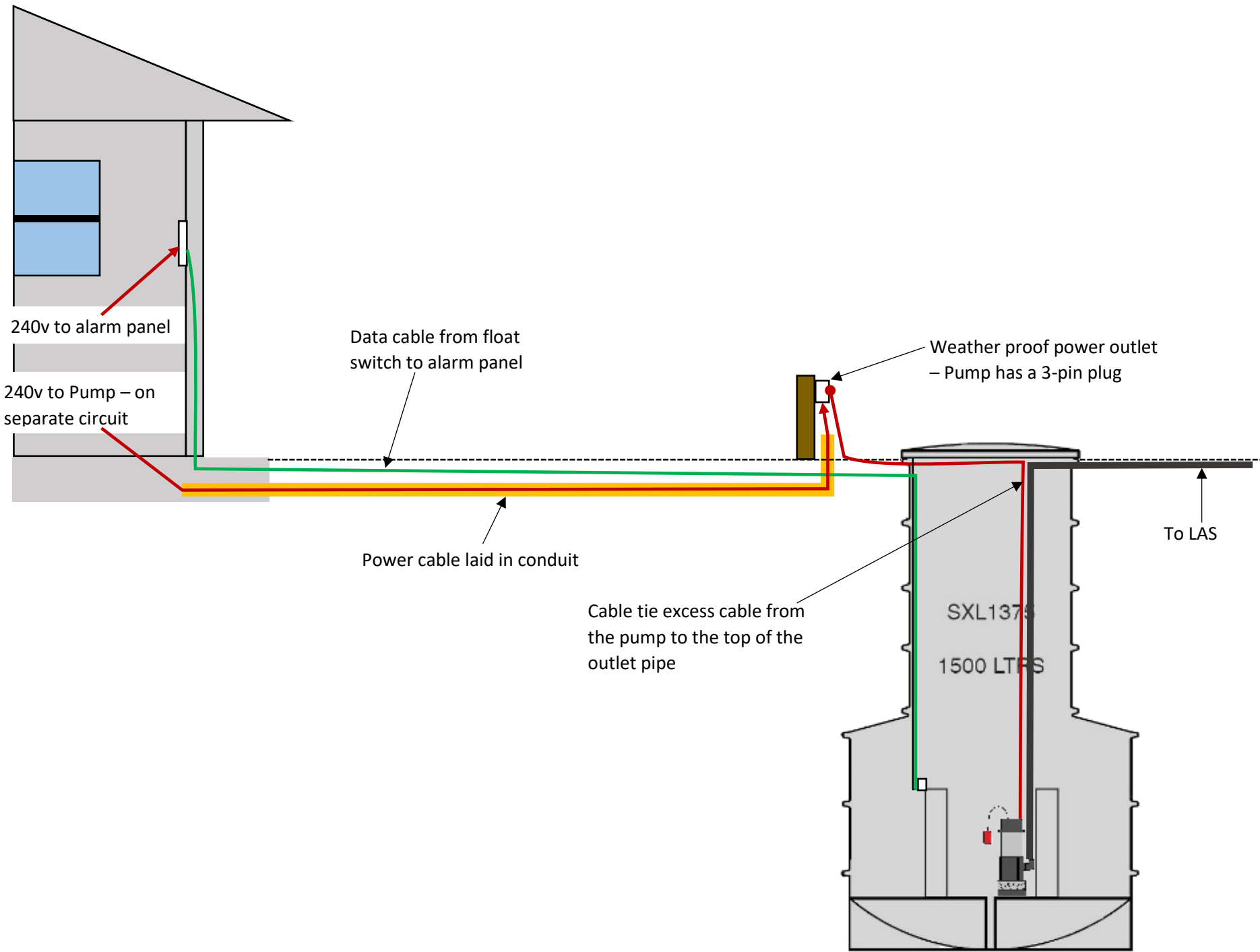
Connections for High Level Alarm

**IMPORTANT:** When installing the alarm panel in the house, ensure it is on a separate circuit to the pump.

**NOTE:** If the alarm sounds as soon as it is connected, there is a switch on the reverse side of the panel with a number 1 by it, this will need switching over. It alters whether the float triggers when it is up or down, it should only trigger when the float is up. Correct installation is 1 up and 2 down as pictured to the right, (or if it is the new 'yellow' float they both should be down) call us if that doesn't work: 0800 628 356



Reverse side of panel



240v to alarm panel

240v to Pump - on separate circuit

Data cable from float switch to alarm panel

Power cable laid in conduit

Cable tie excess cable from the pump to the top of the outlet pipe

Weather proof power outlet - Pump has a 3-pin plug

SXL1375  
1500 LTFS

To LAS

